

CANCER RESEARCH UK RADNET MANCHESTER ANNUAL SHOWCASE

20th May 2021 - 13:30 - 16:30



CANCER
RESEARCH
UK

RADNET
MANCHESTER

ABOUT CRUK RADNET MANCHESTER

CRUK RadNet Manchester is a £16.5m Radiation Research Unit in collaboration with The Christie NHS Foundation Trust. It has a vision to be an integrated world-leading translational radiation oncology programme driving innovative translational science into practice-changing cancer care

MISSION

To enable us to achieve our vision, we need to ensure precision treatments and medicines are equitable and embrace the diversity of our entire population. RadNet Manchester will lead in the development of cancer precision research using radiotherapy in any and all forms to enable curative and life-prolonging treatments to be delivered to everyone. It will take a One Manchester approach to align the best research across the University, Trusts, and Funders directed towards improved outcomes from Greater Manchester and beyond.

Our aim is to unite the best science with world-leading clinical care by leveraging our synergistic Team Science approach. Together, we shall break down research silos and enable interdisciplinary and inter-organisational collaboration using precision biology and radiotherapy targeting.

By enabling innovative thinking and creating opportunities for collaboration, we can unite and translate the basic and discovery scientific work performed in state-of-the-art laboratories with novel radiotherapy treatment protocols. These will influence clinical practice and ultimately change patient outcomes in the NHS and worldwide.



CANCER RESEARCH UK

RADNET MANCHESTER

In collaboration with

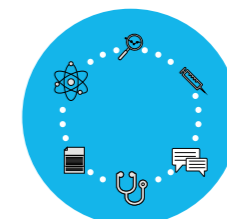


The Christie
NHS Foundation Trust

VALUES



OPENNESS AND
TRANSPARENCY



INTERDISCIPLINARY
SCIENTIFIC
EXCELLENCE



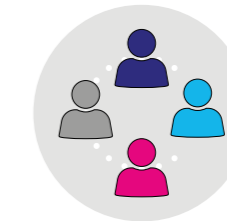
CHAMPION
INNOVATION



RESEARCH
INTEGRITY



CREATE
OPPORTUNITIES
TO EXCEL



EQUALITY,
DIVERSITY AND
INCLUSIVITY

PROGRAMME

INTRODUCTION AND OVERVIEW

13:30 - 13:35	Professor Robert Bristow MD PhD FRCPC FMedSci Director, Manchester Cancer Research Centre robert.bristow@manchester.ac.uk	Welcome and Introduction
13:35 - 13:40	Mr David Hutson	Patient Perspective
13:40 - 13:45	Professor Graham Lord MA PhD FRCP FRSB FMedSci Vice President and Dean of the Faculty of Biology, Medicine and Health graham.lord@manchester.ac.uk	RadNet & Manchester's research landscape
13:45 - 14:15	Professor Marie-Catherine Vozenin Associate Professor, Radiation Therapy marie-catherine.vozenin@unil.ch	Challenges of FLASH radiotherapy: from the FLASH effect to clinical translation

WORK PACKAGE ONE: Investigating the immunological consequences of RT on the tumour microenvironment and normal tissue

14:15 - 14:30	Professor Tim Illidge PhD FRCP FRCR FRCPATH Professor of Targeted Therapy and Oncology tim.illidge@manchester.ac.uk	Investigating radiotherapy induced immune changes in tumour and normal tissue
	Dr Urszula Cytlak-Chaudhuri PhD Research Associate urszula.cytlak-chaudhuri@manchester.ac.uk	

WORK PACKAGE TWO: Treating the complex comorbid cancer patient

14:30 - 14:45	Professor Marcel van Herk PhD Chair in Radiotherapy Physics marcel.vanherk@manchester.ac.uk	Treating the complex comorbid cancer patient
	Dr Azadeh Abravan PhD Research Associate azadeh.abravan@manchester.ac.uk	

WORK PACKAGE THREE: The tumour microenvironment and genetic instability

14:45 - 15:00	Professor Robert Bristow MD PhD FRCPC FMedSci	Hypoxia and genetic architecture
	Mr Michael Dubec Clinical Scientist and PhD student michael.dubec@nhs.net	Oxygen-enhanced MRI

15:00 - 15:10 Comfort Break

PROTON HUB

15:10 - 15:25	Professor Karen Kirkby PhD Professor of Proton Therapy Physics karen.kirkby@manchester.ac.uk	Proton hub
	Dr Mike Merchant PhD Lecturer in Proton Physics michael.merchant@manchester.ac.uk	Designing a proton research beamline for pre-clinical research
	Dr Amy Chadwick PhD Research Associate amy.chadwick@manchester.ac.uk	Proton radiobiology research

CLINICAL INFORMATICS HUB

15.25 - 15.40	Professor Corinne Faivre-Finn FRCR MD PhD Chair of Thoracic Radiation Oncology and Honorary Consultant Clinical Oncologist corinne.finn@nhs.net	Clinical informatics hub - achieving the highest quality with real world data
	Dr Gareth Price PhD Principal Clinical Scientist gareth.price@manchester.ac.uk	

EARLY PHASE RADIOTHERAPY HUB

15.40 - 15.55	Professor Ananya Choudhury MA PhD MRCP FRCR Chair and Honorary Consultant in Clinical Oncology ananya.choudhury@nhs.net	Early phase radiotherapy hub
	Dr Ahmed Salem MBChB PhD FRCR Senior Clinical Lecturer Honorary Consultant in Clinical Oncology Ahmed.salem@manchester.ac.uk	

DOCTORAL ACADEMY HUB

15.55 - 16.10	Dr Cynthia Eccles PhD Head of Radiotherapy Research and Development cynthia.eccles1@nhs.net	Doctoral academy hub
	Mairead Daly Research Radiographer and Postgraduate Researcher mairead.daly@manchester.ac.uk	Therapeutic radiographer to PhD at The University of Manchester Doctoral Academy
16.10 - 16.20	Dr David Thomson MA, BMBCh, PGCME, MD, MRCP, FRCR Consultant Clinical Oncologist david.thomson2@nhs.net	TTF: Head & Neck update

SUMMARY

16.20 - 16.30	Professor Robert Bristow MD PhD FRCPC FMedSci	Summary and final questions
16.30	Event Close	

Engagement



Visit our website

www.mcrc.manchester.ac.uk



Follow us on Twitter

@MCRCCnews



Follow us on LinkedIn

@Manchester Cancer Research Centre

@Cancer Research UK Manchester Centre



For general information or to sign up to our monthly email bulletin

MCRCComms@Manchester.ac.uk



For information about our education and study opportunities

MCRCTraining@Manchester.ac.uk